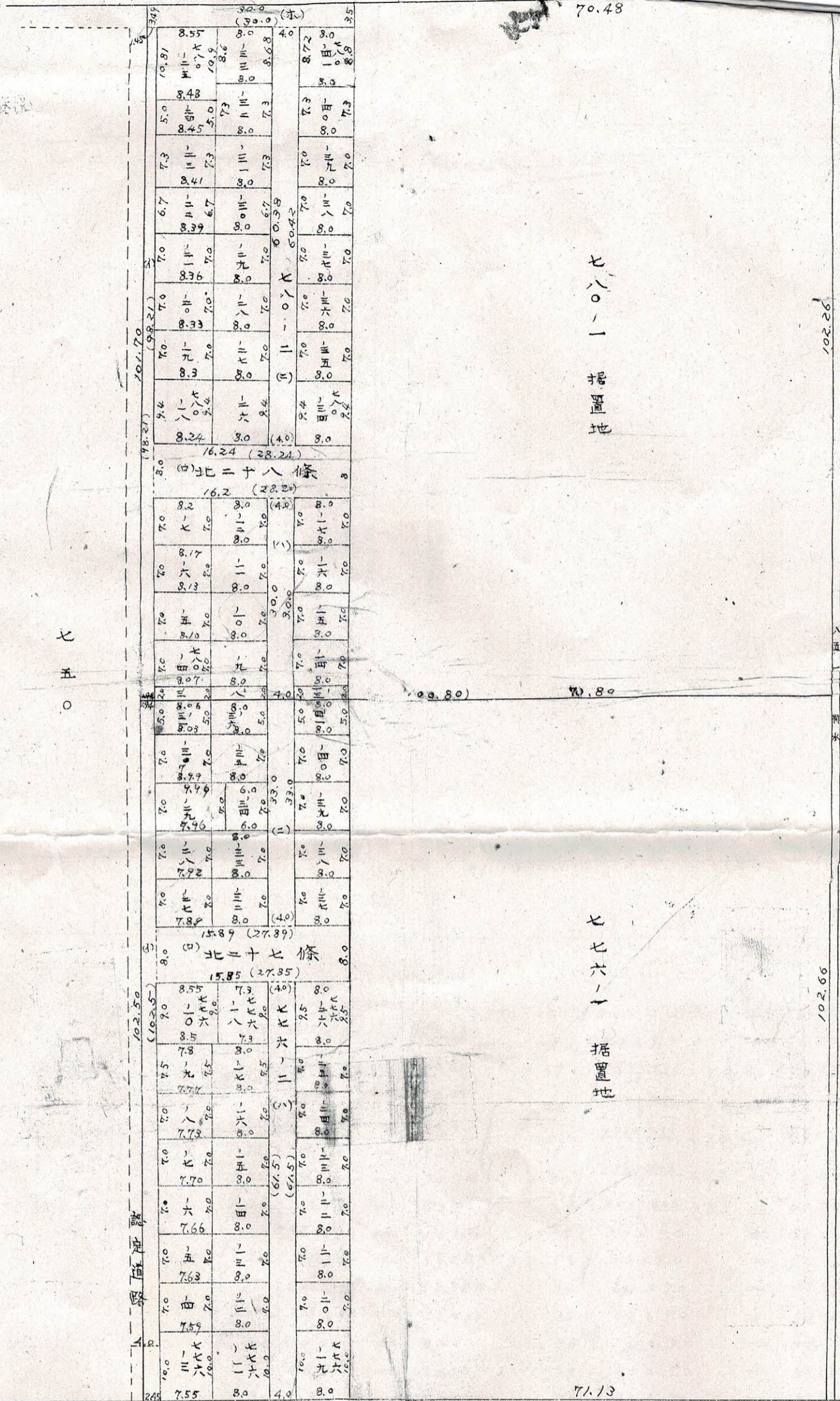


北 = 十九條

100.48

70.48



七  
〇  
八

七  
七  
二

七  
〇  
八  
〇  
一  
据  
置  
地

七  
七  
六  
一  
据  
置  
地

北 = 十六條

作成者

測量 札

776.2	(1)	$\frac{1.94 + 2.45}{2} \times 102.50 = 224.7875$	776.25	$8.0 \times 7.0 = 56.00$
	(2)	$\frac{27.87 + 27.22}{2} \times 8.0 = 222.96$	26	$8.0 \times 9.5 = 76.00$
	(3)	$61.50 \times 4.0 = 246.00$	27	$\frac{7.89 + 7.92}{2} \times 7.0 = 55.335$
	(4)	$33.00 \times 4.0 = 132.00$	28	$\frac{7.72 + 7.76}{2} \times 7.0 = 55.58$
13		$\frac{7.57 + 7.59}{2} \times 10.0 = 75.70$	29	$\frac{7.96 + 7.99}{2} \times 7.0 = 69.825$
14		$\frac{7.57 + 7.63}{2} \times 7.0 = 53.27$	30	$\frac{7.99 + 8.03}{2} \times 7.0 = 56.07$
15		$\frac{7.63 + 7.66}{2} \times 7.0 = 53.515$	31	$\frac{8.03 + 8.06}{2} \times 5.0 = 40.225$
16		$\frac{7.66 + 7.70}{2} \times 7.0 = 53.70$	32	$8.0 \times 7.0 = 56.00$
17		$\frac{7.70 + 7.73}{2} \times 7.0 = 54.005$		

780.2  
(1)  
(2)  
(3)  
(4)  
(5)